

Geraldine Turner

Singer, panellist and MC

Geraldine Turner, OAM is synonymous with Australian show business. Over the past 25 years she has become a public favourite and a consummate performer in almost every aspect of the entertainment industry: an attribute which helped earn her an Order of Australia medal in the 1988 Bicentennial Honours list.

When it comes to musicals, acting, movies, TV cabaret, recording, dance, hosting and singing, Geraldine Turner has 'been there, done that and more'.

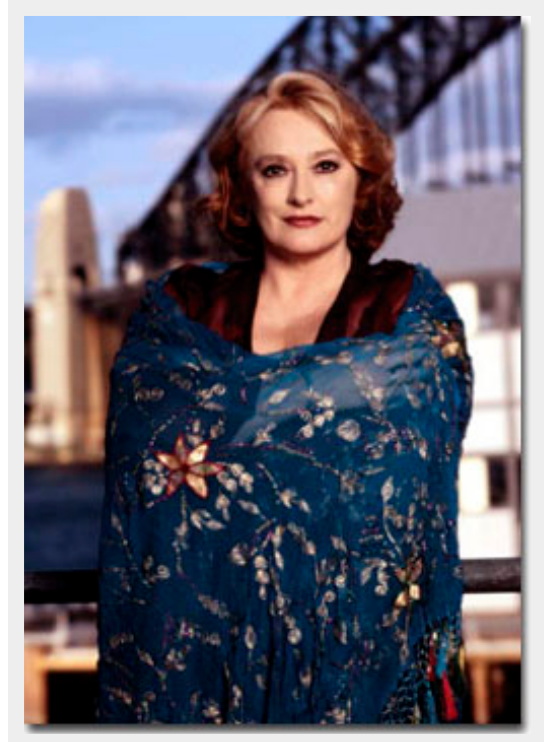
Her career in performance began at an early age. As a child, Geraldine Turner appeared in *Aladdin*, *The Sleeping Princess* and as a regular performer on Queensland's *Cottee's Happy Hour*. A further 10 years training in classical ballet and five years studying classical singing allowed her to pursue a more varied career.

Geraldine Turner has wowed theatre audiences in musicals like *Oliver*, *Chicago*, *Anything Goes*, *Guys and Dolls*, *Sweeney Todd*, operas and operettas like *La Belle Helene* and *HMS Pinafore*: and plays including *Present Laughter* and *Don's Party*. She has performed across Australia as well as New York, London, Vancouver, San Francisco and Africa.

Her film roles include *Careful He Might Hear You* and *Summerfield*. On TV, Geraldine Turner has been a panellist on *Beauty and the Beast*, as well as acting in *G.P.*, *Natural Causes* and *That Man's Father*.

Geraldine Turner has won several awards including two prestigious Green Room Awards (in 1984 for her role as Nancy in *Oliver* and again in 1989 for her role as Reno Sweeney in *Anything Goes*). She also won two Mo Awards, the first in 1989 (again for *Anything Goes*) - and in 1988 for her performance as Mrs Lovett in *Sweeney Todd*.

A wonderfully versatile performer who is held in extremely high regard by her colleagues, clients and music-lovers nationwide, Geraldine Turner's vast experience and professional stage presence make her an ideal MC, panellist or performer at any function.



[VIEW SPEAKER'S BIO ONLINE](#) 

